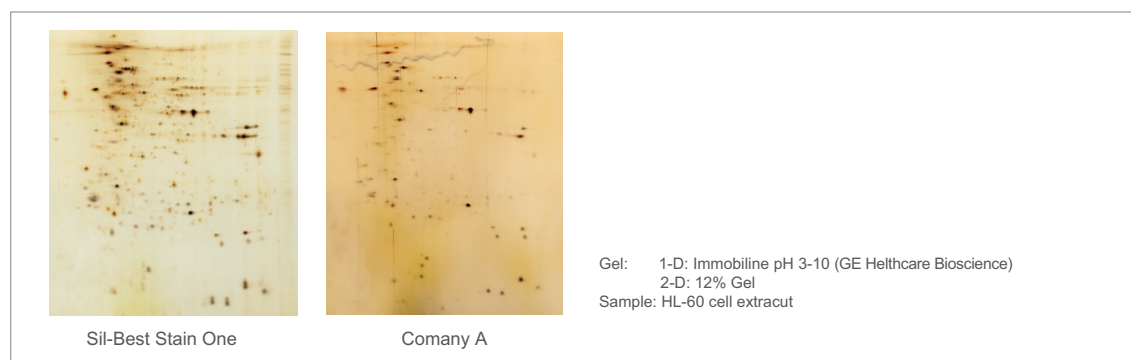


## Sil-Best Stain One

Sil-Best Stain One is high sensitive method for detecting proteins in 2-D gel as its composition does not affect a result of mass spectrography after 2-D.

- » **High Sensitive and Low background**
- » **Not contained Glutaraldehyde**

### Comparison of Staining Image with Sil-Best Stain One and Competitors'



### Ordering Information

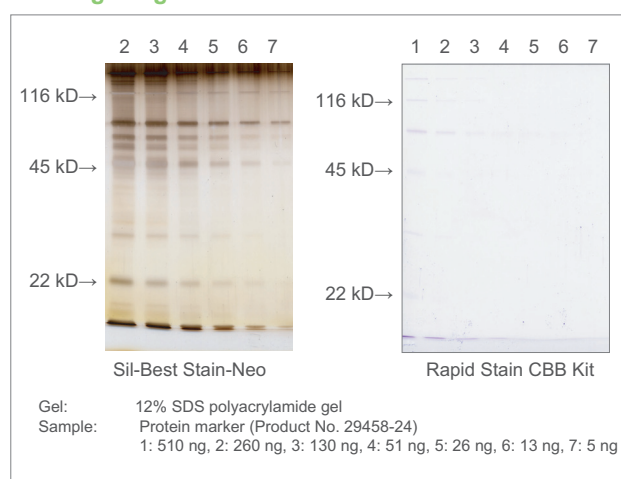
Product Name	Storage	Product No.	PKG Size
Sil-Best Stain One	R	06865-81	1 set

## Sil-Best Stain-Neo

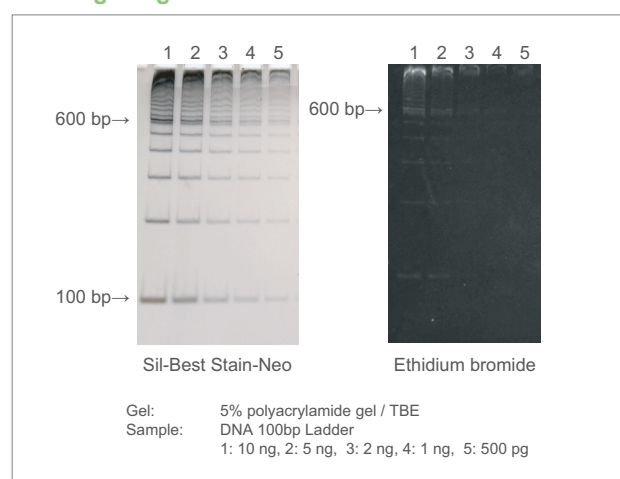
Sil-Best Stain-Neo is a high sensitive method for detecting nucleic acids and proteins in polyacrylamide gel. It is 50-100 fold more sensitive than CBB and ethidium bromide for proteins.

- » **Easy: Only 6 steps**
- » **Fast: Up to 1 hour**

### Staining Image of Protein



### Staining Image of Nucleic Acid



### Ordering Information

Product Name	Storage	Product No.	PKG Size
Sil-Best Stain One	R	06865-81	1 set
Sil-Best Stain-Neo for Protein and Nucleic Acid/PAGE	R	05773-11	1 set

### Related Products

Product Name	Storage	Product No.	PKG Size
Dispotray (for minigel staining)	RT	06563-44	20 pieces

[Storage] RT = Room temperature, R = Refrigerator